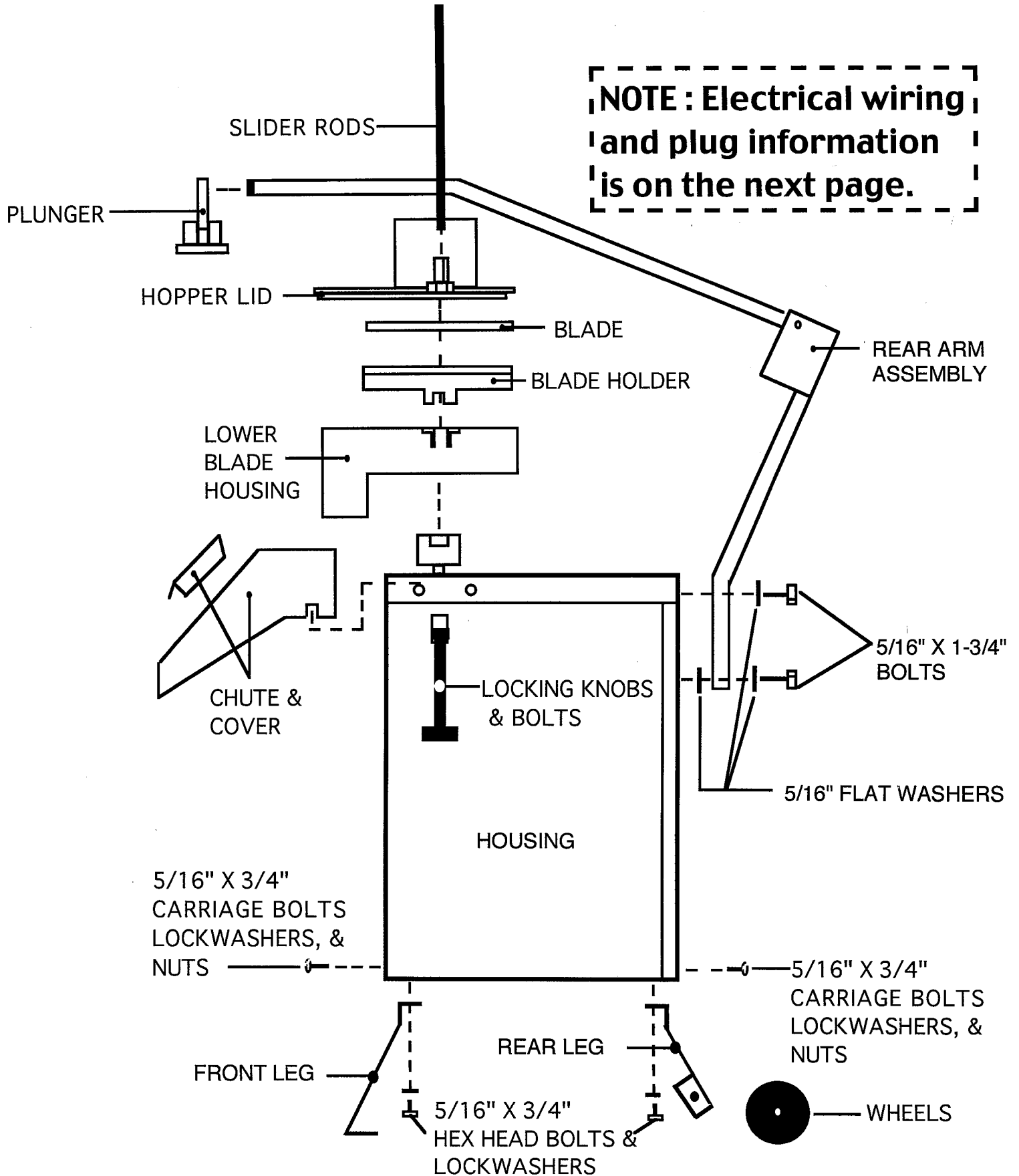


FLOOR MACHINE  
MANUFACTURED - 2000 THRU 2006

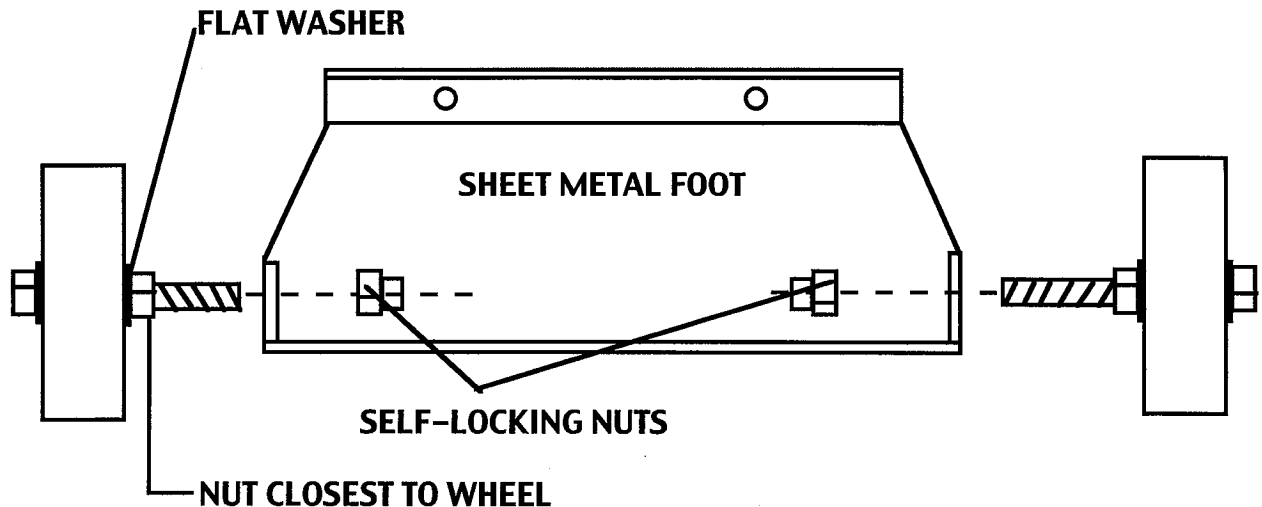
# DRAWING 1

GS-1 ASSEMBLY INSTRUCTIONS  
WITH MANUAL HANDLE



# INSTALLING WHEELS ON THE REAR LEG

1. WE SUGGEST THAT YOU INSTALL THE WHEELS ONTO THE REAR LEG BEFORE YOU INSTALL THE REAR LEG ONTO THE THE MACHINE HOUSING.
2. LOCATE THE 2 WHEELS WITH THE 5/16" X 2 -1/4" HEX HEAD BOLT, 2- 5/16" FLAT WASHERS, 1-5/16" HEX NUT, AND 1 -5/16" SELF-LOCK NUT ATTACHED TO EACH WHEEL.
3. REFERRING TO THE SKETCH BELOW, REMOVE THE 5/16" SELF-LOCKING NUT FROM EACH BOLT.
4. PLACE THE END OF THE HEX HEAD BOLT THROUGH THE HOLE ON EACH SIDE OF THE REAR FOOT.
5. SCREW A 5/16" SELF-LOCKING NUT ONTO THE END OF EACH HEX HEAD BOLT. USING 2 WRENCHES, ONE ON THE BOLT HEAD AND ONE ON THE SELF-LOCKING NUT, TIGHTEN THE NUT. SPIN THE WHEEL TO MAKE SURE IT IS TURNING SMOOTHLY AND FREELY. FINALLY, TIGHTEN THE NUT CLOSEST TO THE WHEEL AGAINST THE REAR FOOT.



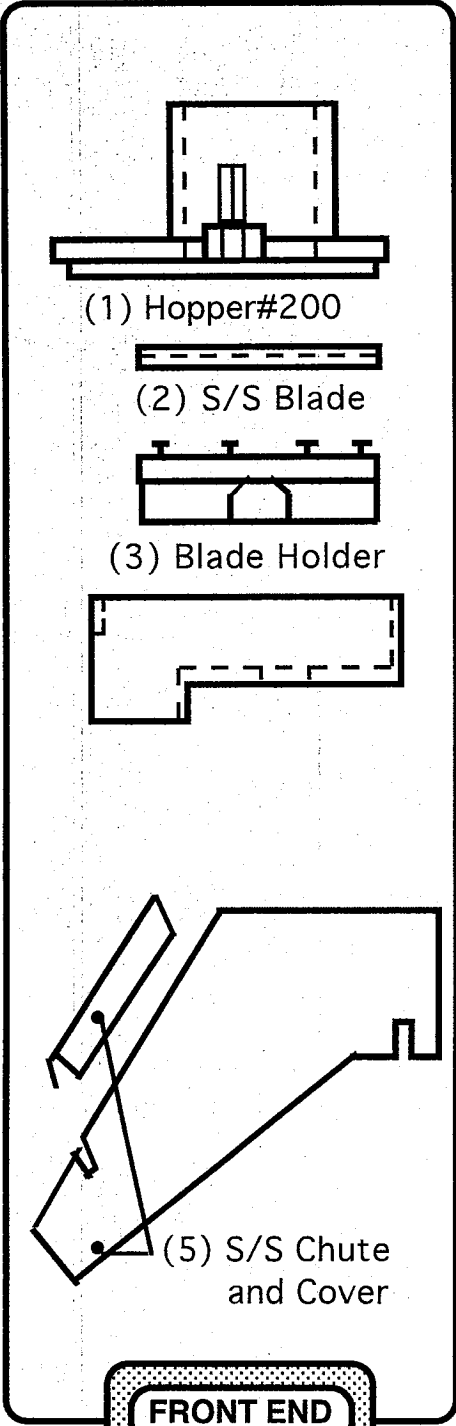
**MODEL GS-1 PARTS LIST**

1.	1	HOPPER LID # 200	<b>FRONT END</b>
2.	1	S/S BLADE-SPECIFY TYP & SIZE	
3.	1	BLADE HOLDER	
4.	1	LOWER BLADE HOUSING #100	
5.	1	S/S CHUTE WITH COVER	
6.	1	S/S REAR ARM ASSEMBLY	<b>PLUNGER ARM ASSEMBLY</b>
7.	1	REAR ARM HARDWARE PACKET*	
8.	1	S/S PLUNGER ARM	
9.	2	END PLUGS	
10.	1	PLUNGER	
11.	2	SLIDER RODS	
12.	1	ON-OFF SWITCH*	<b>MOTOR HOUSING ASSEMBLY</b>
13.	1	INTERLOCK SWITCH-MOMENTARY*	
14.	1	S/S HOUSING TOP	
15.	1	RUBBER SEAL & S/S COVER PLATE	
16.	1	S/S MOTOR HOUSING	
17.	1	S/S REAR PANEL	
18.	2	CHANNEL CLIPS	
19.	2	BOLTS WITH LOCKING KNOBS	
20.	2	S/S FEET (REAR WITH WHEELS)	
21.	4	LABELS *	
22.	1	CORD SET*	
23.	1	TRANSMISSION	<b>DRIVE ASSEMBLY</b>
24.	1	MOTOR 1 -1/2 H.P. - PCL1319 M, 2 H.P.(1 PH) - VL1322T 2 H.P.(3 PH) - VM3558T, 3 H.P.(3 PH) - VM3611, 5 H.P.(3 PH) -VM3615	
25.	2	S/S MIDDLE AND BOTTOM SHELVES	
26.	1	S/S TOP MOUNT	
27.	1	CONTACTOR SWITCH & S/S MOUNT	

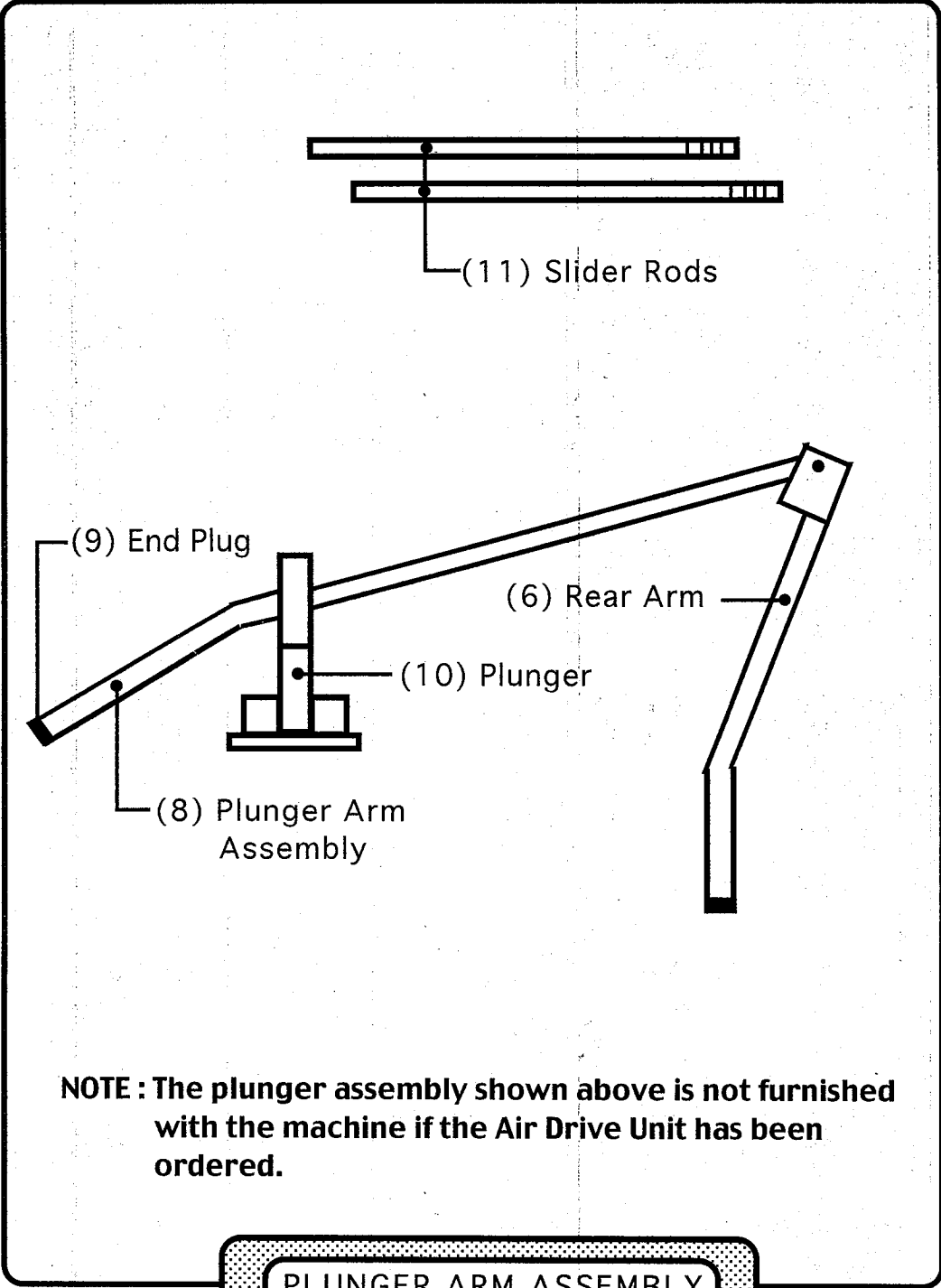
\* DENOTES PARTS NOT SHOWN ON DRAWINGS

PRICES WILL BE FURNISHED UPON REQUEST AT TIME OF THE ORDER  
 PALAZZOLO MANUFACTURING CO.  
 743 BARG SALT RUN ROAD  
 CINCINNATI, OHIO 45244

# MODEL GS-1 PARTS LIST

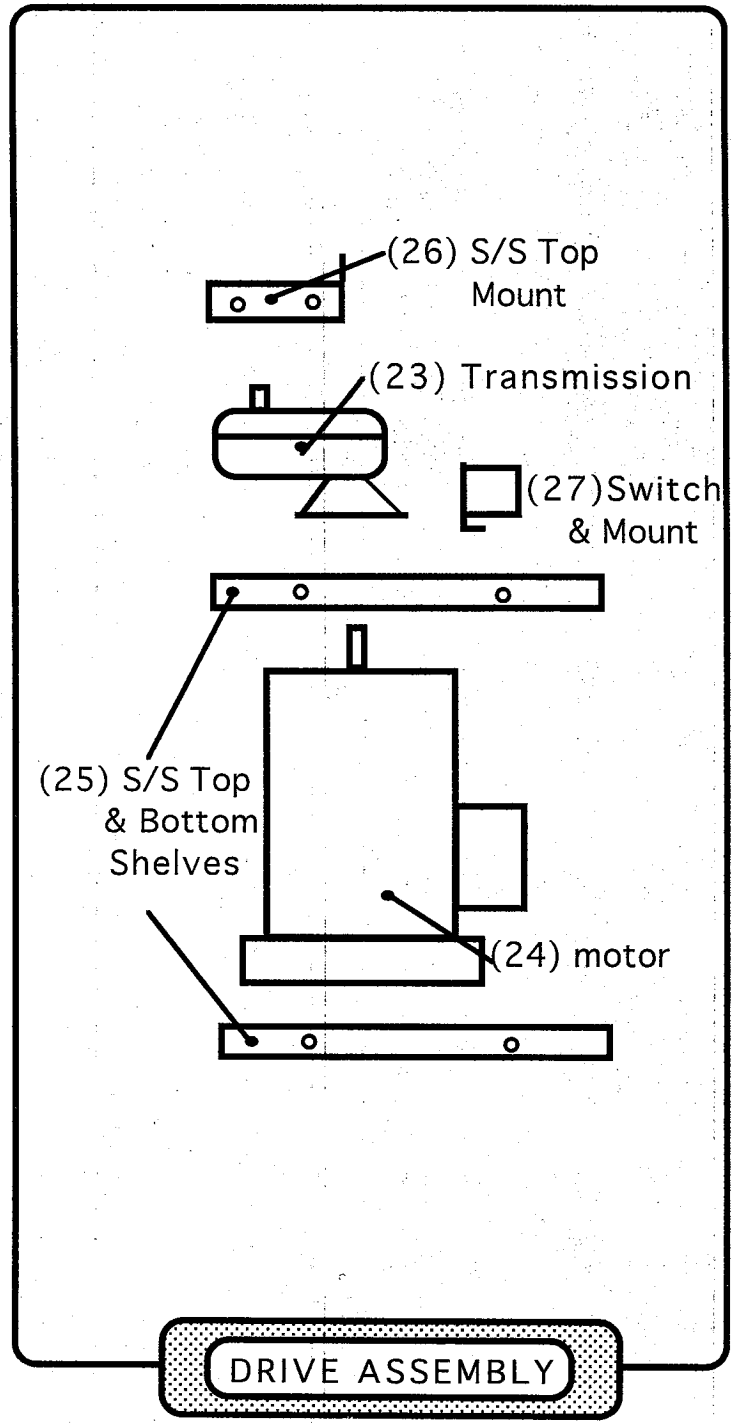
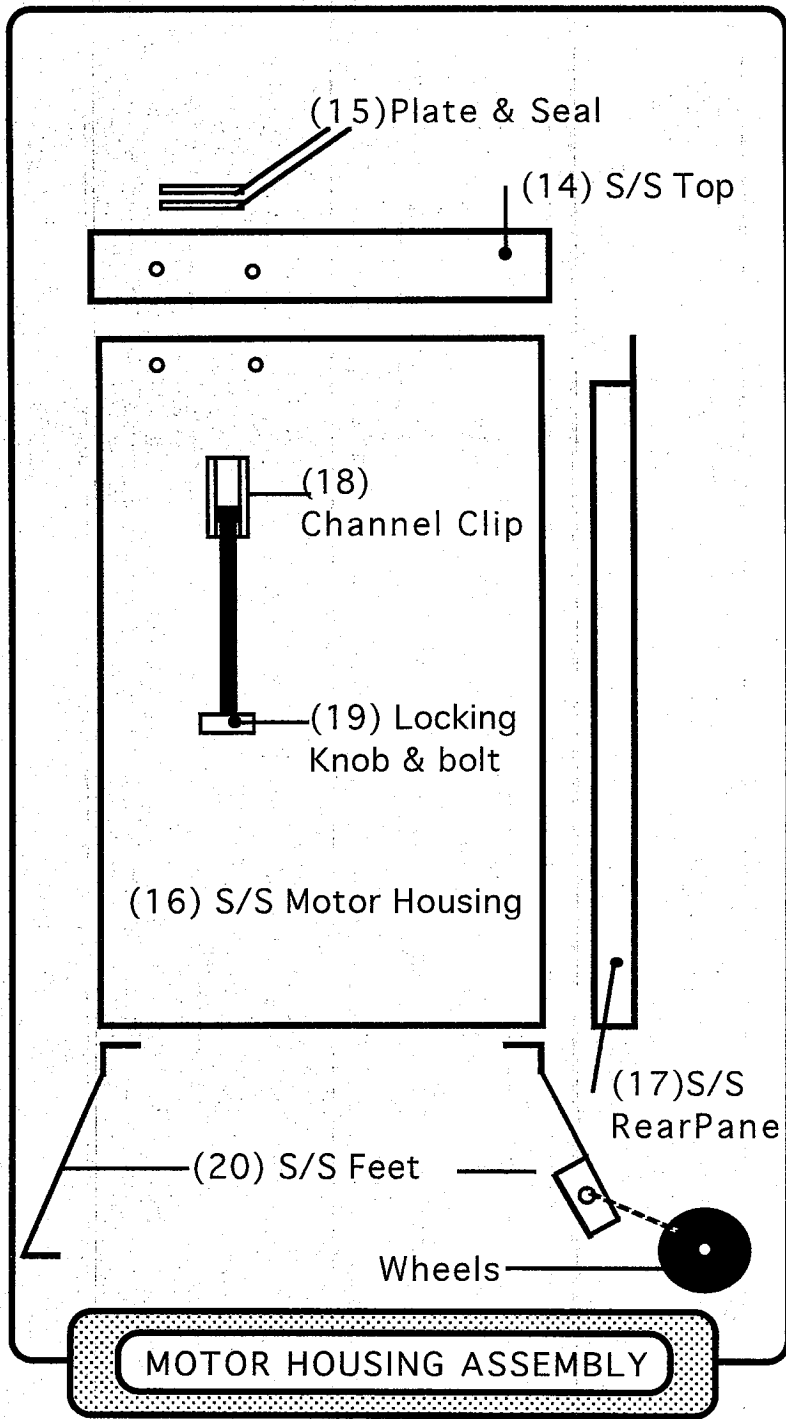


FRONT END

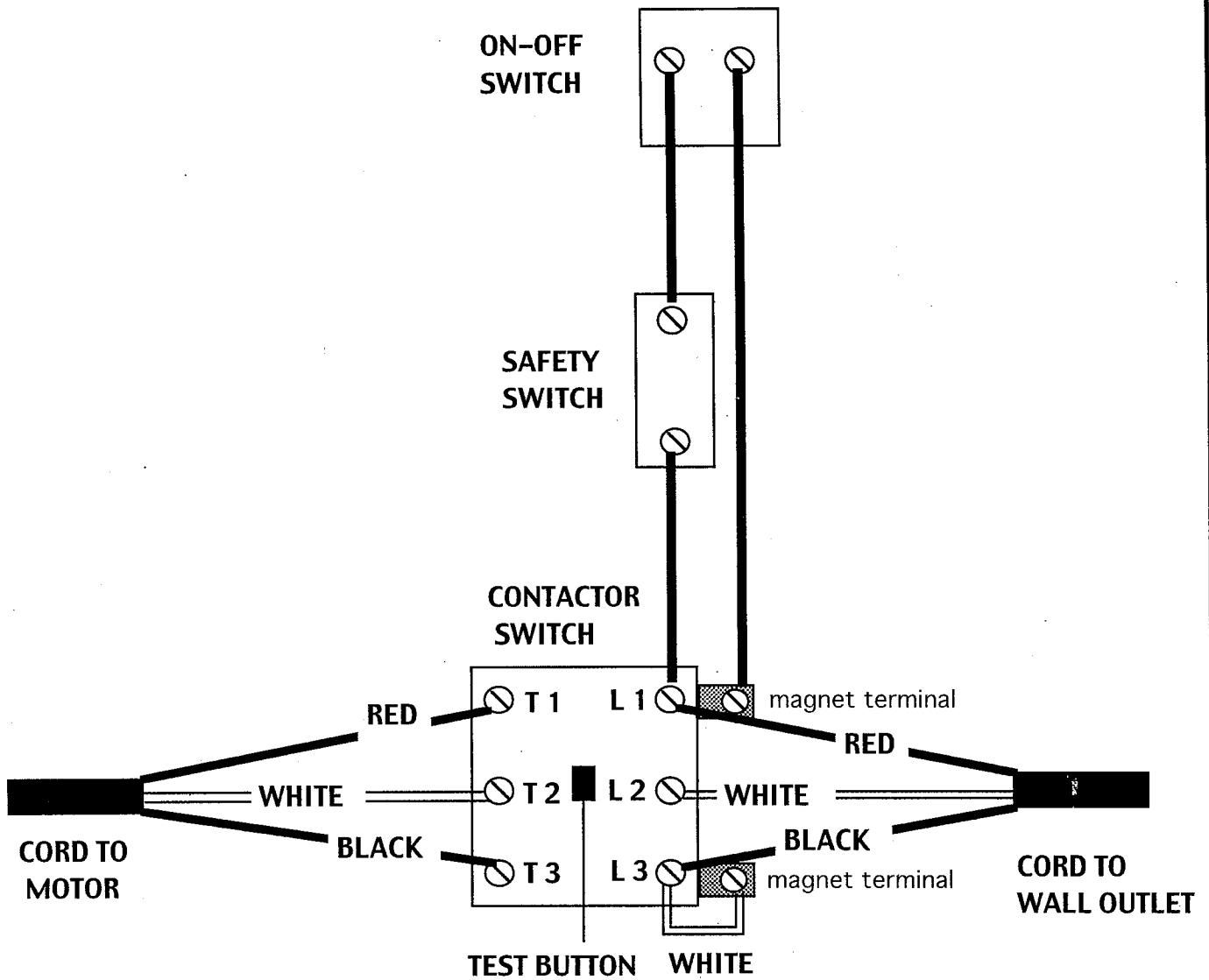


PLUNGER ARM ASSEMBLY

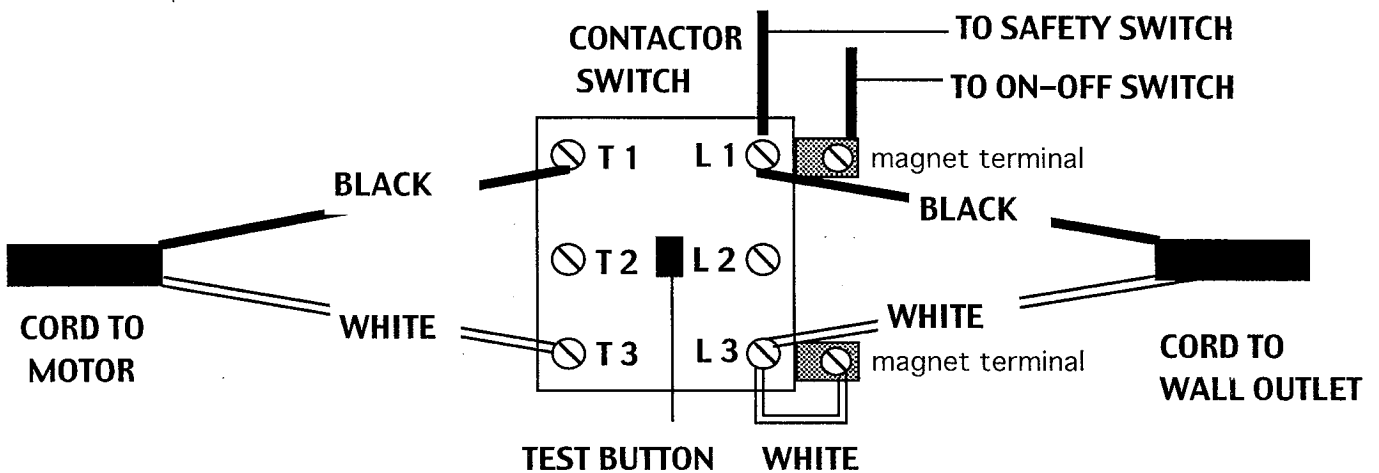
**NOTE :** The plunger assembly shown above is not furnished with the machine if the Air Drive Unit has been ordered.



## 2 H.P.- 3 H.P. & 5 H.P. THREE PHASE WIRING DIAGRAM



## 1-1/2 H.P. & 2 H.P. SINGLE PHASE WIRING DIAGRAM



## TROUBLE-SHOOTING THE ELECTRICAL SYSTEM ON YOUR MACHINE

THE ELECTRICAL CIRCUIT IN YOUR MACHINE IS VERY SIMPLE. THERE ARE 2 BASIC CIRCUIT LOOPS, THE ON-OFF SWITCH AND THE INTERLOCK SWITCH CONNECTED TO THE MAGNET IN THE CONTACTOR SWITCH IS ONE CIRCUIT AND THE CORD FROM THE WALL OUTLET, THE CONTACTOR SWITCH TERMINALS, AND THE CORD TO THE MOTOR IS THE SECOND CIRCUIT. (REFER TO WIRE DIAGRAMS ON PREVIOUS PAGE 12.)

1. IF YOUR MACHINE DOES NOT START WHEN YOU TURN IT ON, CHECK THE CIRCUIT BREAKER IN YOUR ELECTRICAL PANEL BY TURNING IT OFF AND THEN BACK ON. WITH A VOLTAGE METER, CHECK THE WALL OUTLET TO MAKE SURE THE OUTLET IS HOT AND IT IS PUTTING OUT THE CORRECT VOLTAGE. IF THE MACHINE STILL DOES NOT START, OPEN THE PLUG ON THE CORD GOING FROM YOUR MACHINE TO THE WALL OUTLET TO MAKE SURE NO WIRES CAME LOOSE. THIS CAN ONLY BE PERFORMED IF YOUR MACHINE HAS A 3 PHASE MOTOR. CLOSE THE PLUG AND TEST THE MACHINE AGAIN. IF THE MOTOR DOES NOT START, CONTINUE TO STEP 2.
2. REMOVE THE FRONT COVER FROM THE MACHINE CASE. PUSH THE BLACK TEST BUTTON ON THE CONTACTOR SWITCH IN. IF THE MOTOR STARTS, GO TO STEP 3. IF THE MOTOR DOESN'T START, THE MOTOR OR THE ELECTRICAL CIRCUIT TO YOUR MACHINE IS FAULTY. HAVE AN ELECTRICIAN CHECK YOUR ELECTRICAL CIRCUIT. IF THE ELECTRICAL CIRCUIT TESTS OKAY, YOU HAVE A MOTOR PROBLEM. CALL US AT 1-800-513-6333 FOR THE NEAREST BALDOR ELECTRIC COMPANY SERVICE CENTER.
3. IF YOU DO NOT HEAR THE CONTACTOR SWITCH CLICK WHEN YOU TURN YOUR ON-OFF SWITCH TO THE ON POSITION, THAT SUGGESTS THAT THE ON-OFF SWITCH, THE INTERLOCK SWITCH, AND THE CONTACTOR MAGNET CIRCUIT IS NOT WORKING. **UNPLUG THE MACHINE** FROM THE WALL OUTLET. USE A CONTINUITY TESTER ON THE INTERLOCK SWITCH AND THE ON-OFF SWITCH TO MAKE SURE THEY ARE TURNING ON AND OFF WHEN YOU OPERATE THE SWITCHES. IF THESE 2 SWITCHES TEST OKAY, THEN THE CONTACTOR SWITCH IS THE PROBLEM AND NEEDS TO BE REPLACED.

CALL US AT 1-800-513-6333 IF YOU HAVE ANY QUESTIONS.