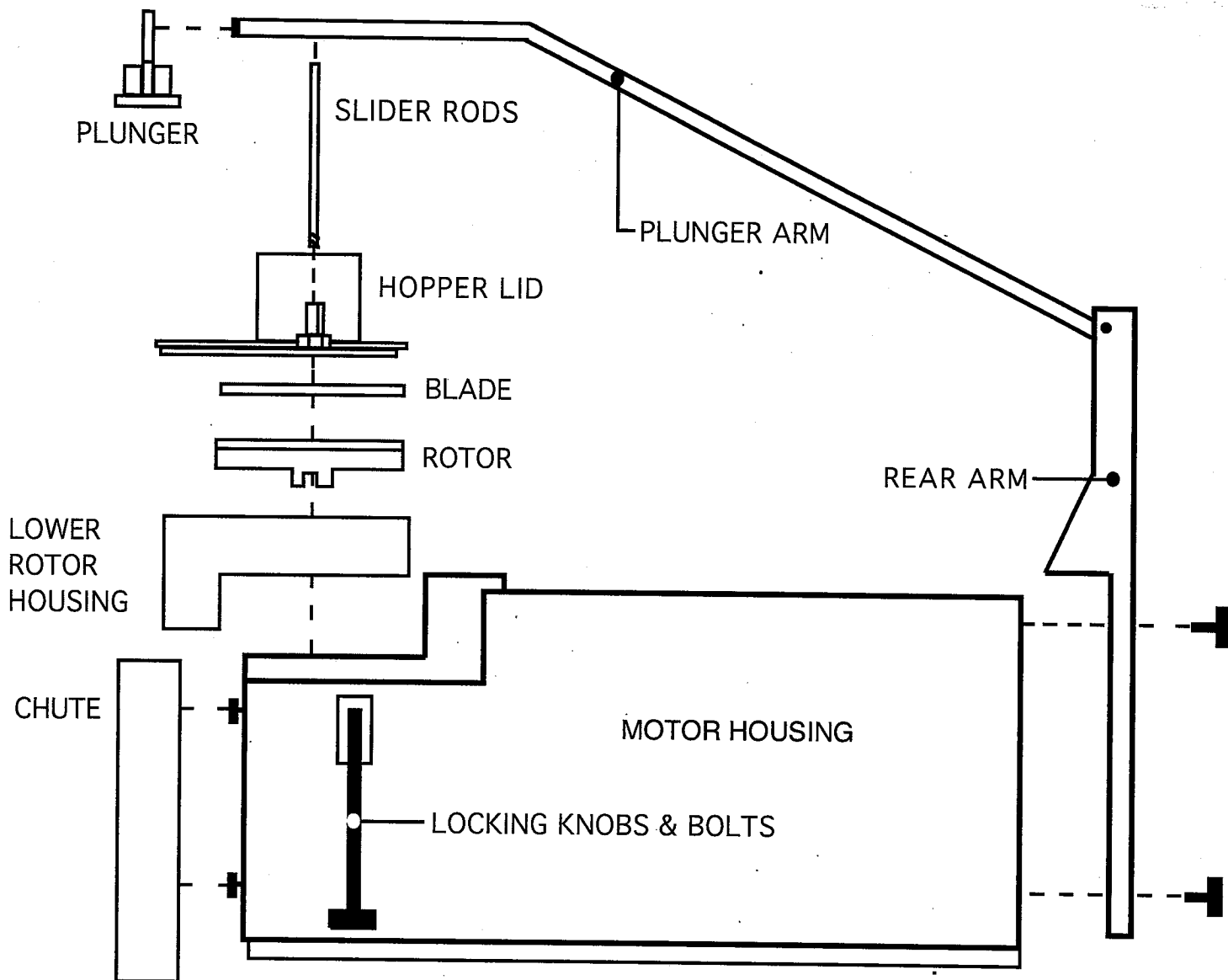


ORIGINAL TABLE TOP MACHINE
MANUFACTURED -1985 THRU 1999

GS-1 ASSEMBLY INSTRUCTIONS



1. Unpack the Motor Housing assembly from its shipping container and place it on your table. Cut the strap and remove the wooden cradle from under the machine. Remove the 2 black knobs from poly bag in the smaller shipping container and install them on the ends of the locking bolts
2. Unpack the Rear Arm/Plunger Arm assembly and Slider Rods from the shipping container. Remove the 2 knobs (with studs) from poly bag located in the small box and place the Rear Arm against the back plate of Motor Housing over the two holes as shown in the sketch above. Start both knobs first, then tighten them.
3. Unpack the small shipping container which contains the front-end pieces. Cut the strap and separate the parts. Place the Motor Housing so that the front edge of the Motor Housing is flush with the front edge of your table. Install the Chute on the four bolt heads protruding from the front panel of the Motor Housing. Then place the Lower Rotor Housing onto the Motor Housing. Next place the Rotor onto the transmission shaft and twist while pushing down until the Rotor seats itself. Make sure the Rotor is all the way down. Then install the Blade onto the Rotor and twist until it locks onto the Rotor's pins. Next install the Hopper Lid. The black knobs should then be screwed onto the long swivel bolt on each side of the motor housing. Swivel the long bolts into the slots on the Hopper Lid and tighten the black knobs firmly. Place 2 Slider Rods into the nuts in Hopper Lid, and hand tighten Slider Rods. Install end of Plunger Arm through slot in top of Plunger and lower Plunger over the slider rods.
4. Plug the machine in to a properly wired outlet and test machine to make sure nothing is rubbing when the machine is turned on. You are now ready to shred or grate cheese.

MODEL GS-1 PARTS LIST

| | | | |
|-----|---|---|-------------------------------|
| 1. | 1 | HOPPER LID # 200 | FRONT END |
| 2. | 1 | S/S BLADE-SPECIFY TYPE | |
| 3. | 1 | ROTOR | |
| 4. | 1 | LOWER ROTOR HOUSING #100 | |
| 5. | 1 | S/S/ CHUTE | |
| 6. | 1 | REAR ARM CASTING | PLUNGER ARM ASSEMBLY |
| 7. | 2 | KNOBS WITH STUDS | |
| 8. | 1 | S/S PLUNGER ARM | |
| 9. | 2 | END PLUGS | |
| 10. | 1 | PLUNGER | |
| 11. | 2 | SLIDER RODS | |
| 12. | 1 | ON-OFF SWITCH* | MOTOR HOUSING ASSEMBLY |
| 13. | 1 | INTERLOCK SWITCH-MOMENTARY* | |
| 14. | 1 | ROTOR HOUSING PLATFORM #500 | |
| 15. | 1 | S/S MOTOR HOUSING | |
| 16. | 1 | S/S FRONT PLATE | |
| 17. | 2 | CHANNEL CLIPS WITH BOLTS | |
| 18. | 2 | LOCKING KNOBS | |
| 19. | 1 | LABEL * | DRIVE ASSEMBLY |
| 20. | 1 | TRANSMISSION | |
| 21. | 1 | MOTOR 1-1/2 H.P. - PCL1319 M, 2 H.P.(1 PH) - PCL1322 M, (3 PH) - M3157TA | |
| 22. | 2 | COUPLINGS 4X187 | |
| 23. | 1 | COUPLING 4X186 OR 4X188 (3 PH) | |
| 24. | 2 | RUBBER INSERTS 1X407 | |
| 25. | 1 | CORD SET * | |
| 26. | 1 | PLASTIC SEAL AND MOUNTING SCREW | |
| 27. | 1 | BASE PLATE | |
| 28. | 1 | TRANSMISSION MOUNT | |
| 29. | 2 | BASE RAILS | |
| 30. | 2 | MOTOR BRACES | |

* DENOTES PARTS NOT SHOWN ON DRAWINGS

PRICES WILL BE FURNISHED UPON REQUEST AT TIME OF THE ORDER
 PALAZZOLO MANUFACTURING CO.
 743 BARG SALT RUN ROAD
 CINCINNATI, OHIO 45244
 513-528-7016

MODEL GS-1 PARTS LIST

