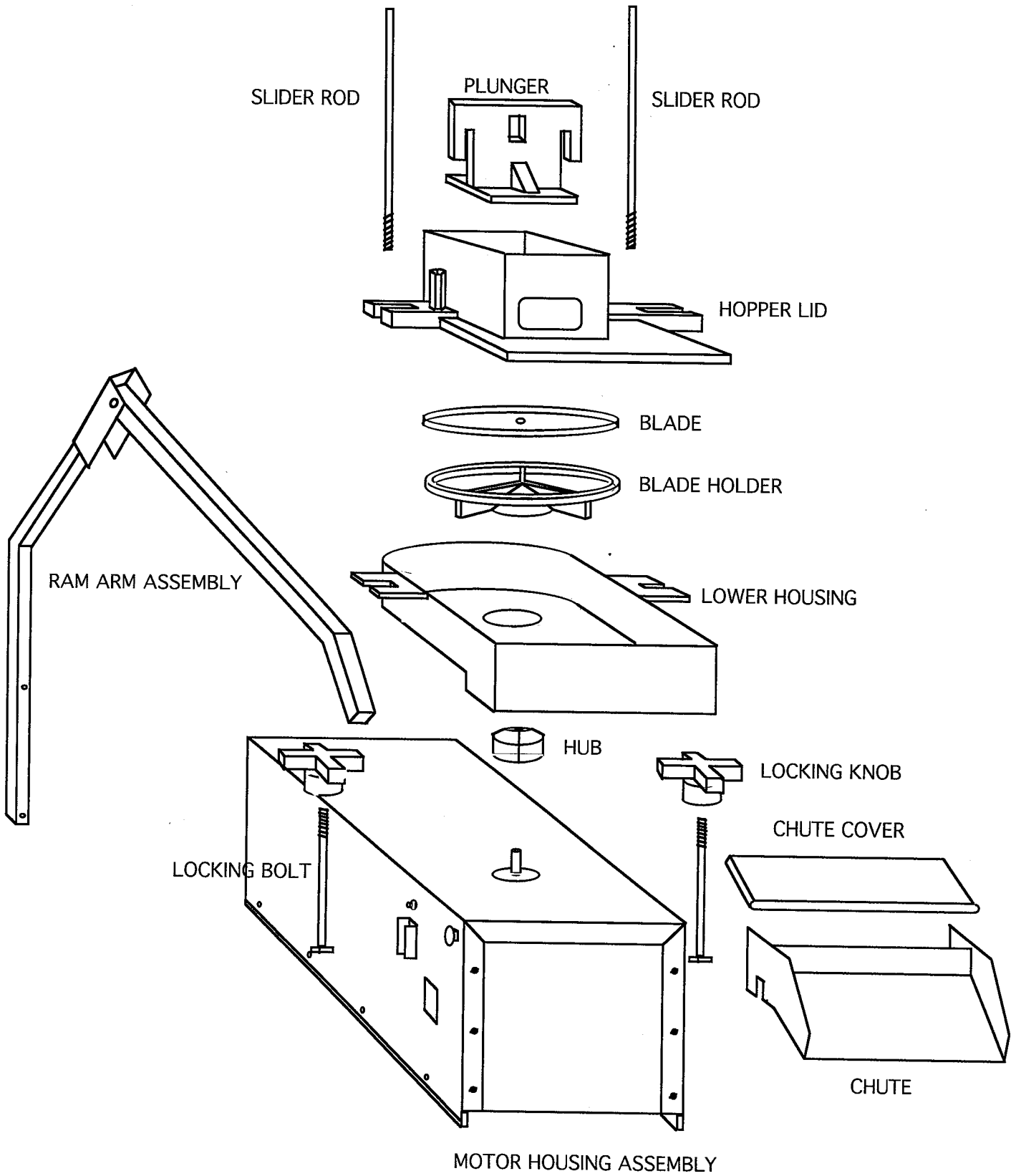


SECOND TABLE TOP MACHINE
MANUFACTURED - 2007 THRU 2009

DRAWING 1



MODEL GS-1 PARTS LIST

FRONT END/RAM ARM PARTS – PAGE 10

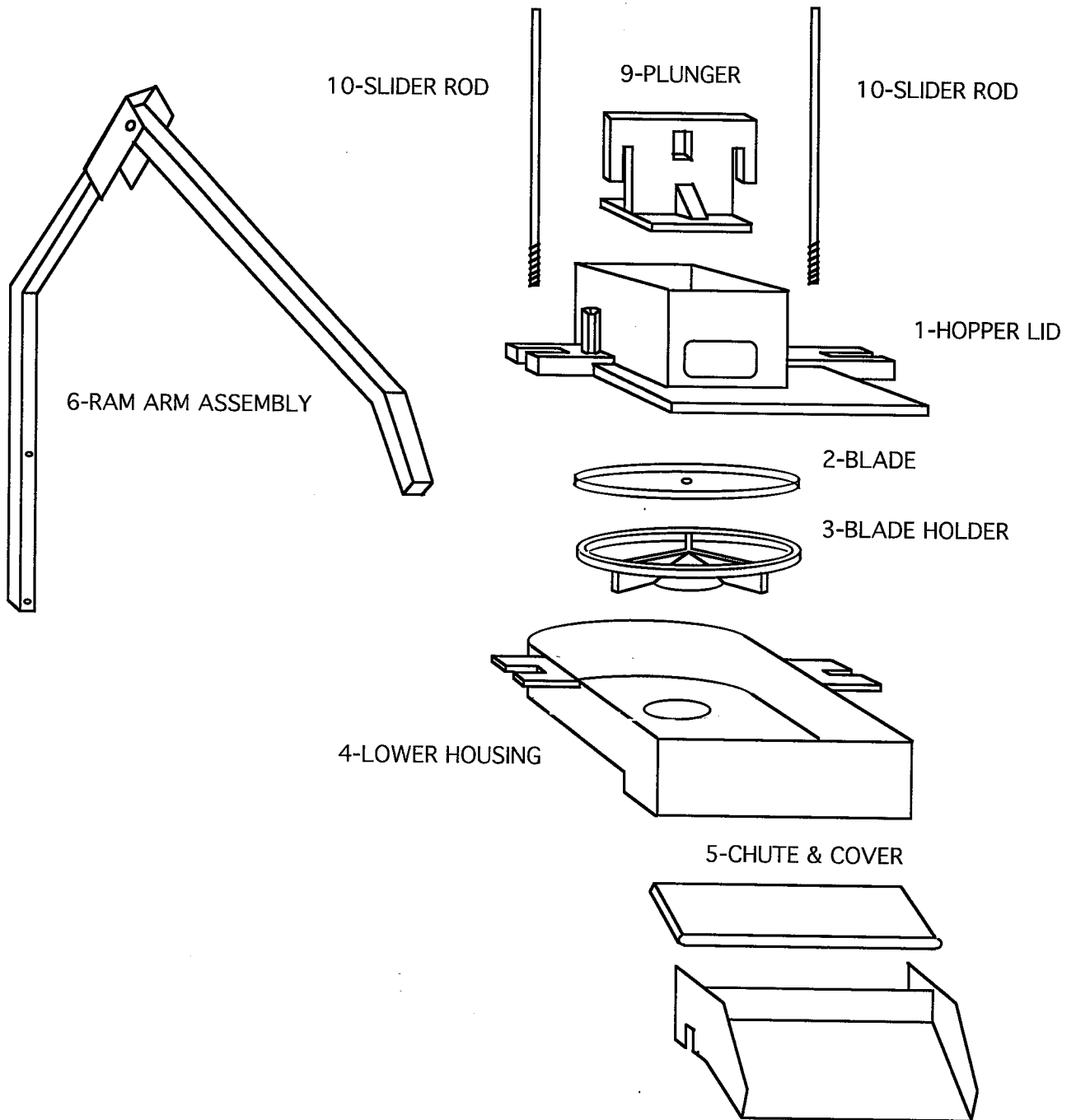
1. 1 HOPPER LID
2. 1 BLADE
3. 1 BLADE HOLDER
4. 1 LOWER HOUSING
5. 1 CHUTE & COVER
6. 1 RAM ARM ASSEMBLY
7. 1 REAR ARM HARDWARE PACKET*
8. 2 END PLUGS*
9. 1 PLUNGER
10. 2 SLIDER RODS

MOTOR DRIVE AND HOUSING PARTS – PAGE 11

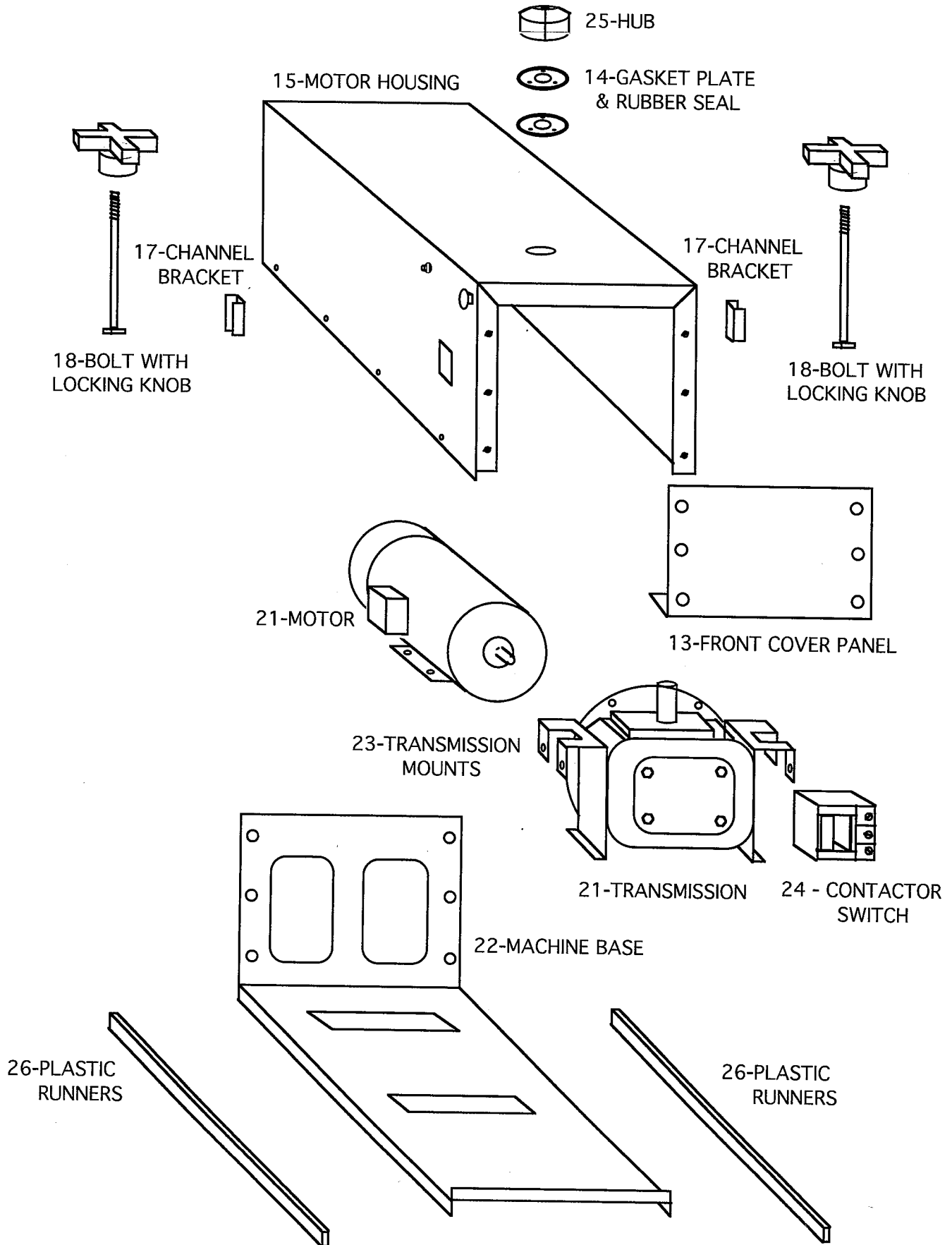
11. 1 ON-OFF SWITCH*
12. 1 INTERLOCK SWITCH-MOMENTARY*
13. 1 S/S FRONT COVER PANEL
14. 1 RUBBER SEAL & S/S COVER PLATE
15. 1 S/S MOTOR HOUSING
16. 1 S/S REAR PANEL (5 h.p.only)
17. 2 CHANNEL CLIPS
18. 2 BOLTS WITH LOCKING KNOBS
19. 4 LABELS *
20. 1 CORD SET*
21. 1 TRANSMISSION / MOTOR SETS:
 - 1-1/2 H.P. – T1.5-1-56C
 - 2 H.P.(1 PH) – T2-18-56C
 - 2 H.P.(3 PH) – AT2-18-56C
 - 3 H.P.(3 PH) – VM3611
 - 5 H.P.(3 PH) – VM3615
22. 1 MACHINE BASE
23. 2 TRANSMISSION MOUNTS
24. 1 CONTACTOR SWITCH
25. 1 HUB FOR ROTOR
26. 2 PLASTIC RUNNER

* DENOTES PARTS NOT SHOWN ON DRAWINGS
PALAZZOLO MANUFACTURING CO.
743 BARG SALT RUN ROAD
CINCINNATI, OHIO 45244
513-528-7016

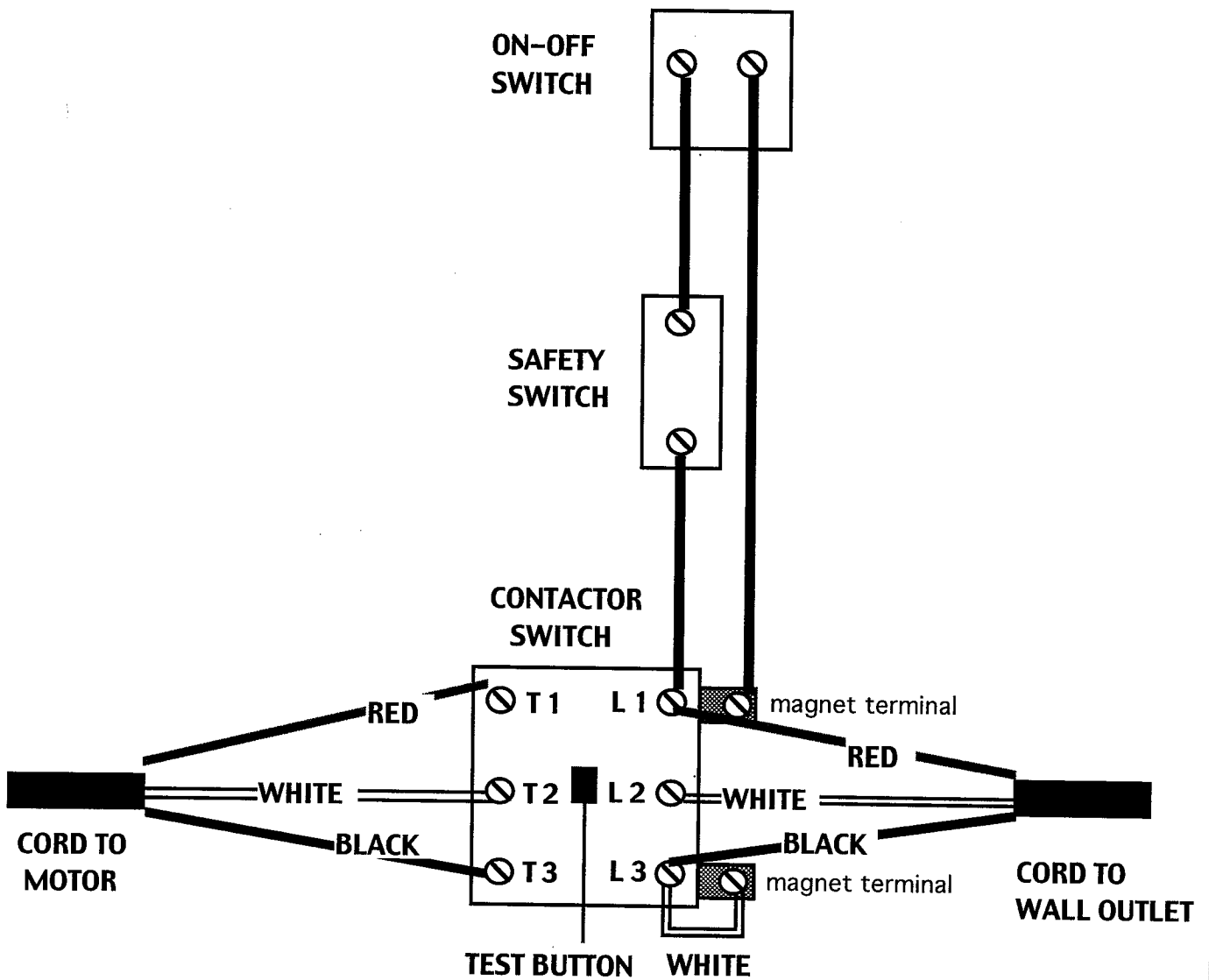
FRONT END RAM / ARM PARTS



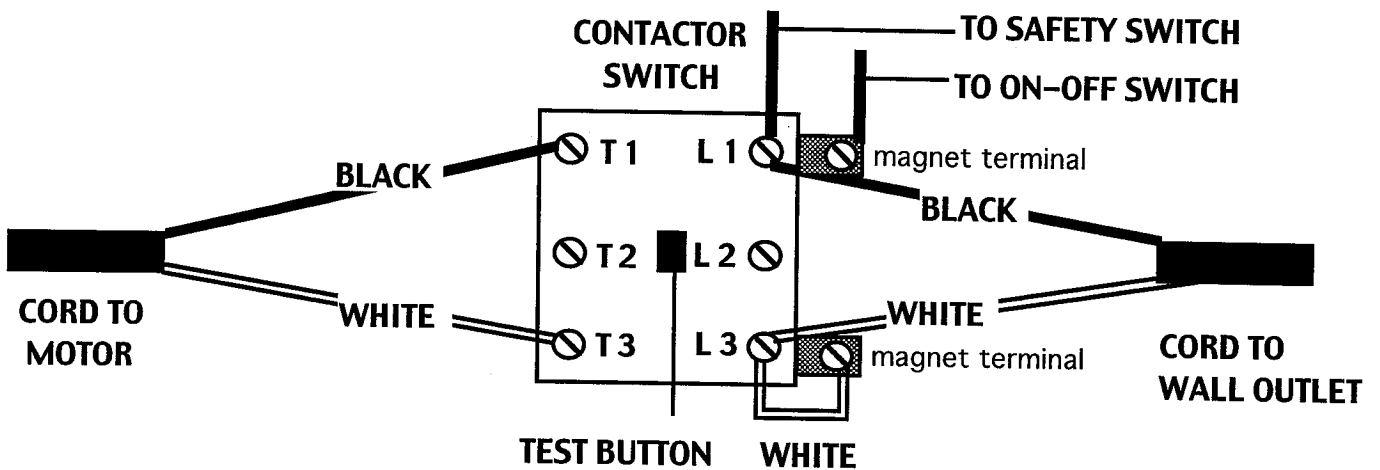
MOTOR DRIVE AND HOUSING PARTS



2 H.P.- 3 H.P. & 5 H.P. THREE PHASE WIRING DIAGRAM



1-1/2 H.P. & 2 H.P. SINGLE PHASE WIRING DIAGRAM



TROUBLE-SHOOTING THE ELECTRICAL SYSTEM ON YOUR MACHINE

THE ELECTRICAL CIRCUIT IN YOUR MACHINE IS VERY SIMPLE. THERE ARE 2 BASIC CIRCUIT LOOPS, THE ON-OFF SWITCH AND THE INTERLOCK SWITCH CONNECTED TO THE MAGNET IN THE CONTACTOR SWITCH IS ONE CIRCUIT AND THE CORD FROM THE WALL OUTLET, THE CONTACTOR SWITCH TERMINALS, AND THE CORD TO THE MOTOR IS THE SECOND CIRCUIT. (REFER TO WIRE DIAGRAMS ON PREVIOUS PAGE 12.)

- 1. IF YOUR MACHINE DOES NOT START WHEN YOU TURN IT ON, CHECK THE CIRCUIT BREAKER IN YOUR ELECTRICAL PANEL BY TURNING IT OFF AND THEN BACK ON. WITH A VOLTAGE METER, CHECK THE WALL OUTLET TO MAKE SURE THE OUTLET IS HOT AND IT IS PUTTING OUT THE CORRECT VOLTAGE. IF THE MACHINE STILL DOES NOT START, OPEN THE PLUG ON THE CORD GOING FROM YOUR MACHINE TO THE WALL OUTLET TO MAKE SURE NO WIRES CAME LOOSE. THIS CAN ONLY BE PERFORMED IF YOUR MACHINE HAS A 3 PHASE MOTOR. CLOSE THE PLUG AND TEST THE MACHINE AGAIN. IF THE MOTOR DOES NOT START, CONTINUE TO STEP 2.**
- 2. REMOVE THE FRONT COVER FROM THE MACHINE CASE. PUSH THE BLACK TEST BUTTON ON THE CONTACTOR SWITCH IN. IF THE MOTOR STARTS, GO TO STEP 3. IF THE MOTOR DOESN'T START, THE MOTOR OR THE ELECTRICAL CIRCUIT TO YOUR MACHINE IS FAULTY. HAVE AN ELECTRICIAN CHECK YOUR ELECTRICAL CIRCUIT. IF THE ELECTRICAL CIRCUIT TESTS OKAY, YOU HAVE A MOTOR PROBLEM. CALL US AT 1-800-513-6333 FOR THE NEAREST BALDOR ELECTRIC COMPANY SERVICE CENTER.**
- 3. IF YOU DO NOT HEAR THE CONTACTOR SWITCH CLICK WHEN YOU TURN YOUR ON-OFF SWITCH TO THE ON POSITION, THAT SUGGESTS THAT THE ON-OFF SWITCH, THE INTERLOCK SWITCH, AND THE CONTACTOR MAGNET CIRCUIT IS NOT WORKING. **UNPLUG THE MACHINE** FROM THE WALL OUTLET. USE A CONTINUITY TESTER ON THE INTERLOCK SWITCH AND THE ON-OFF SWITCH TO MAKE SURE THEY ARE TURNING ON AND OFF WHEN YOU OPERATE THE SWITCHES. IF THESE 2 SWITCHES TEST OKAY, THEN THE CONTACTOR SWITCH IS THE PROBLEM AND NEEDS TO BE REPLACED.**

CALL US AT 1-800-513-6333 IF YOU HAVE ANY QUESTIONS.